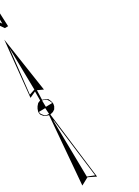
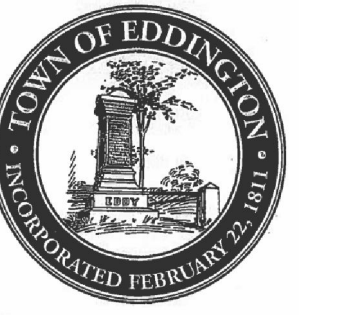


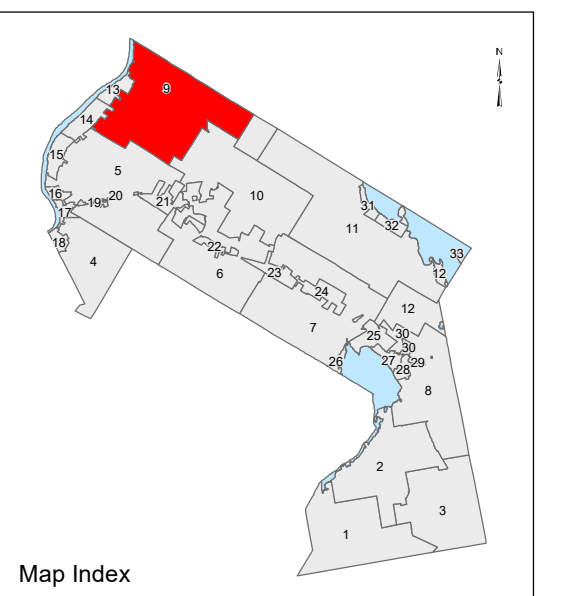
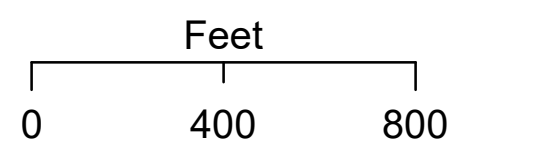
EDDINGTON
Penobscot County, ME



LEGEND

- PROPERTY LINE
- PUBLIC RIGHT-OF-WAY
- PRIVATE RIGHT-OF-WAY
- HISTORIC/SUBDIVISION LINE
- EASEMENT or ROW
- PARCEL HOOK
- 2-1** PARCEL ID NUMBER
- 2-1** LEASED LOT NUMBER
- 150' SURVEY DIMENSION (FEET)
- 1 SURVEY LOT NUMBER

The information on this map is for assessment purposes only, is not a legal survey, and is not intended to be used for conveyance.



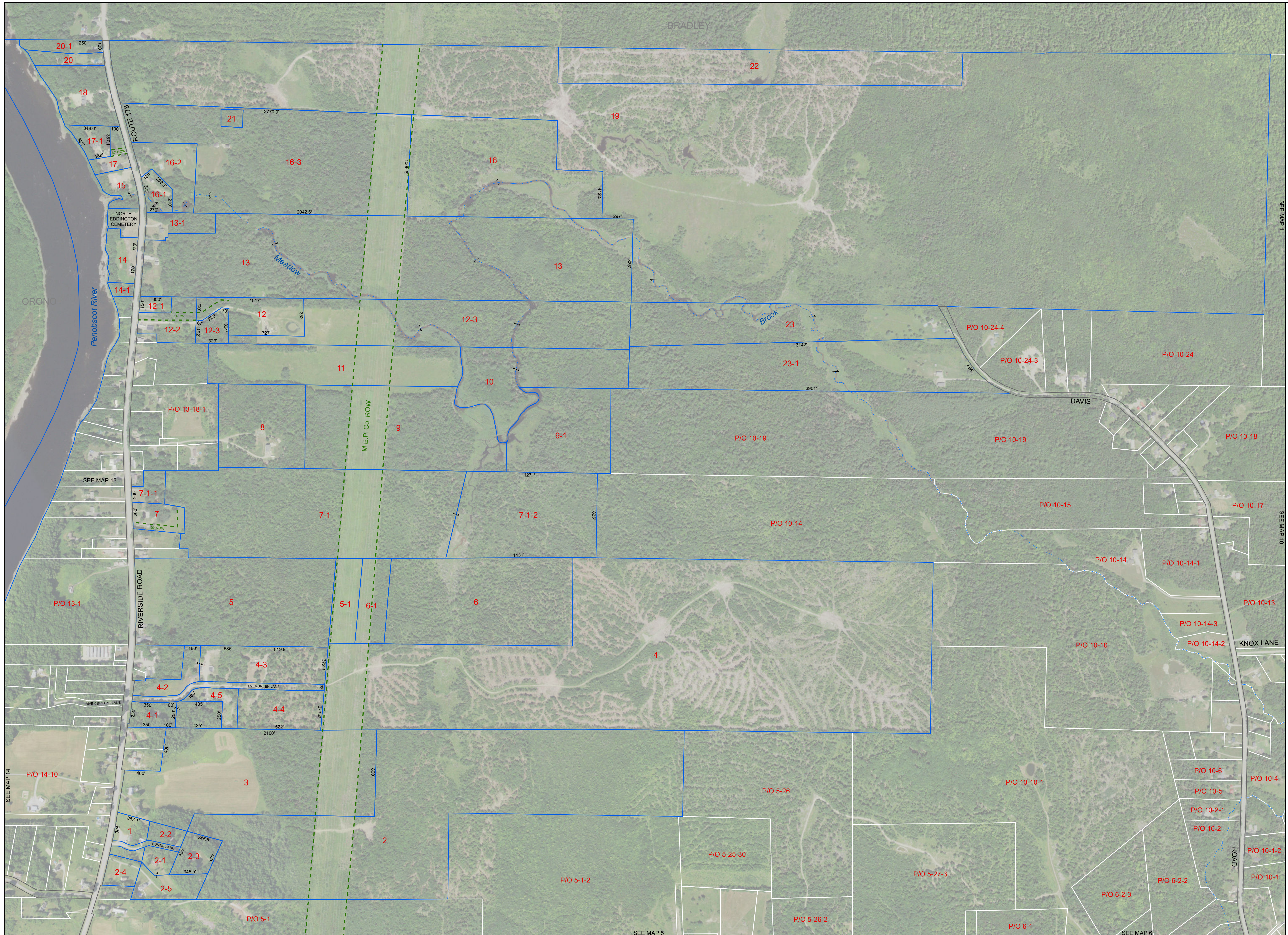
Aerial Layer Credits: USDA FSA (2018)

Original map created by J. W. Sewall Company
Map updated by LatLong Logic, LLC with
Global Information Systems, LLC
(April 2021)

Print Date: 12/29/2021

Eddington Assessor's Office
906 Main Road
Eddington, Maine 04428
(207) 843-5233

Tax Map
9



SEE MAP 13

SEE MAP 14

SEE MAP 5

SEE MAP 6

SEE MAP 11

SEE MAP 10