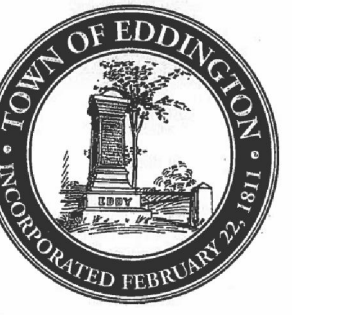


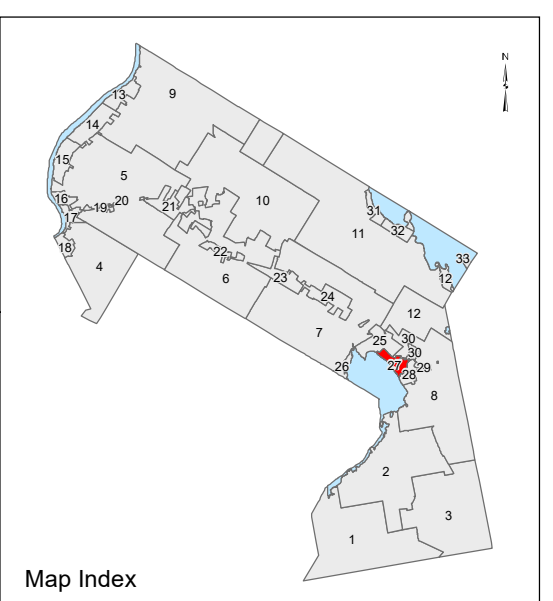
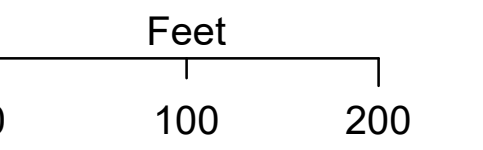
**EDDINGTON**  
Penobscot County, ME



**LEGEND**

- PROPERTY LINE
- PUBLIC RIGHT-OF-WAY
- PRIVATE RIGHT-OF-WAY
- HISTORIC/SUBDIVISION LINE
- EASEMENT or ROW
- PARCEL HOOK
- 2-1 PARCEL ID NUMBER
- 2-1 LEASED LOT NUMBER
- 150' SURVEY DIMENSION (FEET)
- 1 SURVEY LOT NUMBER

The information on this map is for assessment purposes only, is not a legal survey, and is not intended to be used for conveyance.



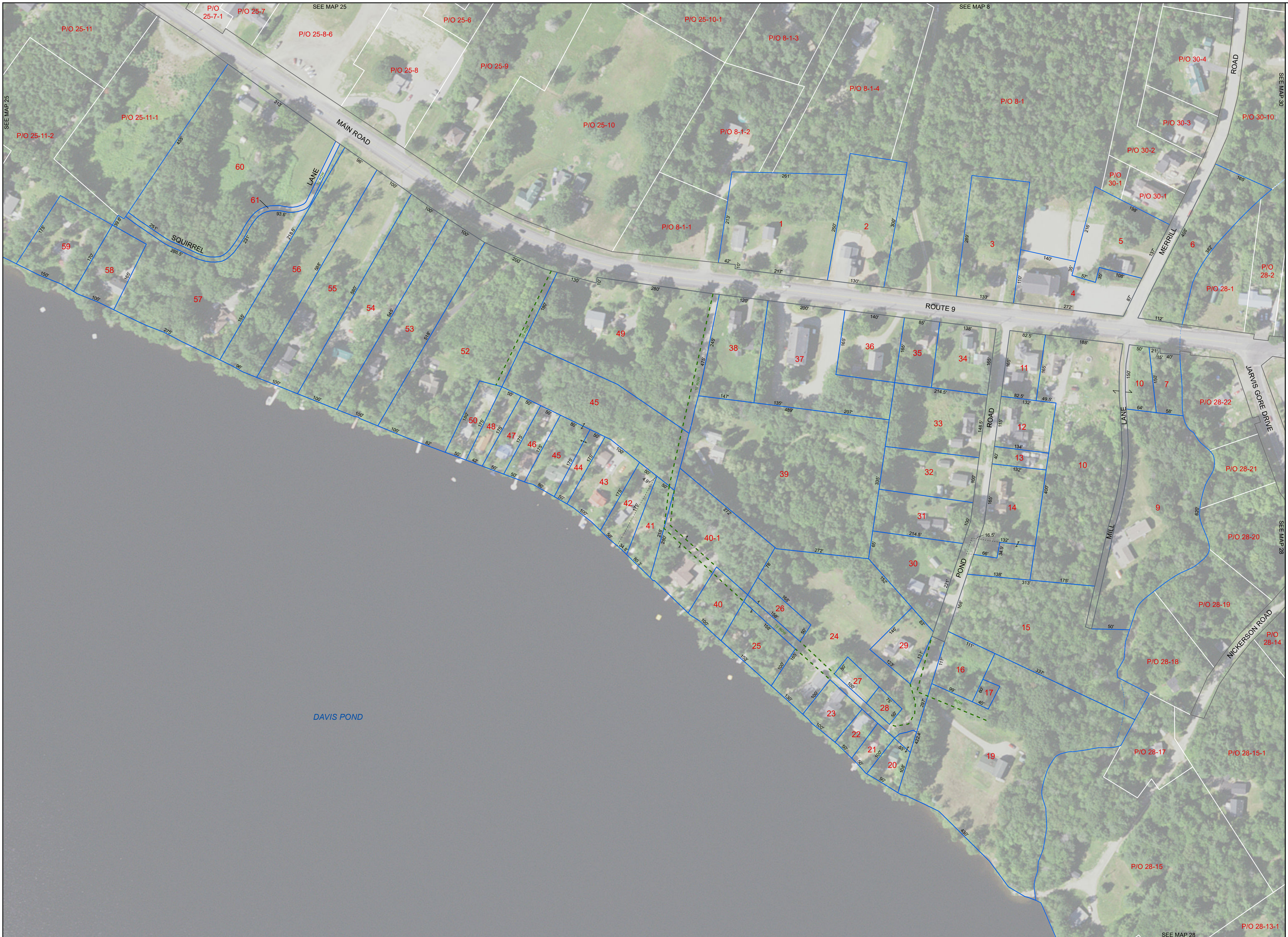
Aerial Layer Credits: USDA FSA (2018)

Original map created by J. W. Sewall Company  
Map updated by LatLong Logic, LLC with  
Global Information Systems, LLC  
(April 2021)

Print Date: 12/29/2021

Eddington Assessor's Office  
906 Main Road  
Eddington, Maine 04428  
(207) 843-5233

**Tax Map**  
**27**



SEE MAP 25

SEE MAP 25

SEE MAP 8

SEE MAP 30

SEE MAP 28

SEE MAP 28