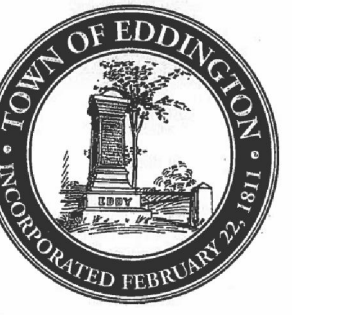


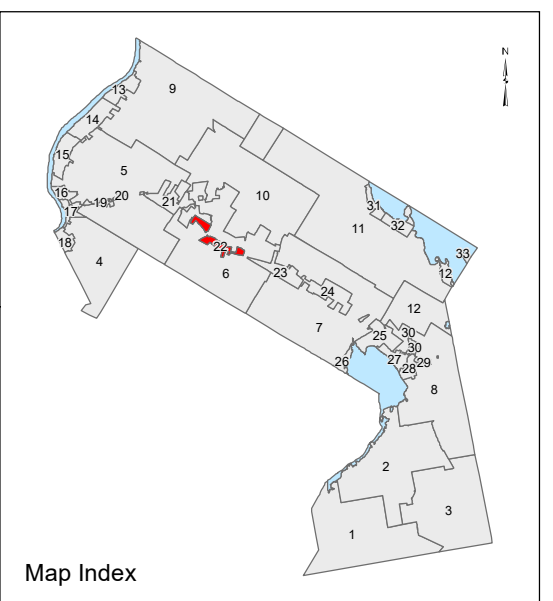
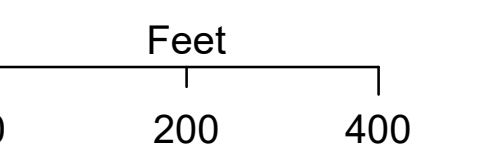
EDDINGTON
Penobscot County, ME



LEGEND

- PROPERTY LINE
- PUBLIC RIGHT-OF-WAY
- PRIVATE RIGHT-OF-WAY
- HISTORIC/SUBDIVISION LINE
- EASEMENT or ROW
- PARCEL HOOK
- 2-1 PARCEL ID NUMBER
- 2-1 LEASED LOT NUMBER
- 150' SURVEY DIMENSION (FEET)
- 7 SURVEY LOT NUMBER
- HYDROLOGY
- WETLANDS

The information on this map is for assessment purposes only, is not a legal survey, and is not intended to be used for conveyance.

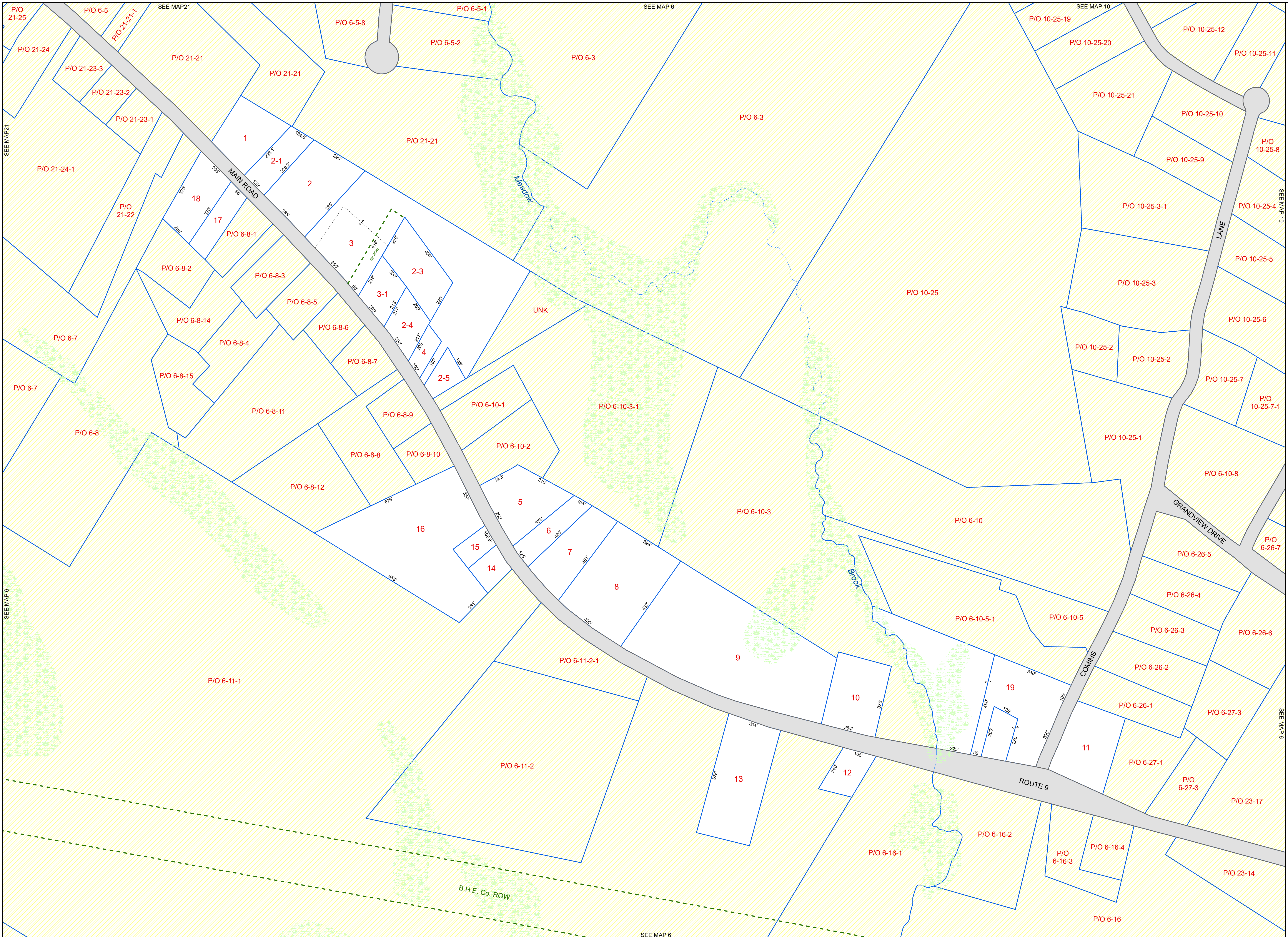


Original map created by J. W. Sewall Company
Map updated by LatLong Logic, LLC with
Global Information Systems, LLC
(April 2021)

Print Date: 12/29/2021

Eddington Assessor's Office
906 Main Road
Eddington, Maine 04428
(207) 843-5233

Tax Map
22



SEE MAP 21
SEE MAP 6
SEE MAP 10

SEE MAP 10
SEE MAP 6
SEE MAP 6

SEE MAP 6
SEE MAP 6
SEE MAP 6

B.H.E. Co. ROW

UNK

MEADOW

BROOK

COMINS

LANE

GRANDVIEW DRIVE

ROUTE 9

MAIN ROAD